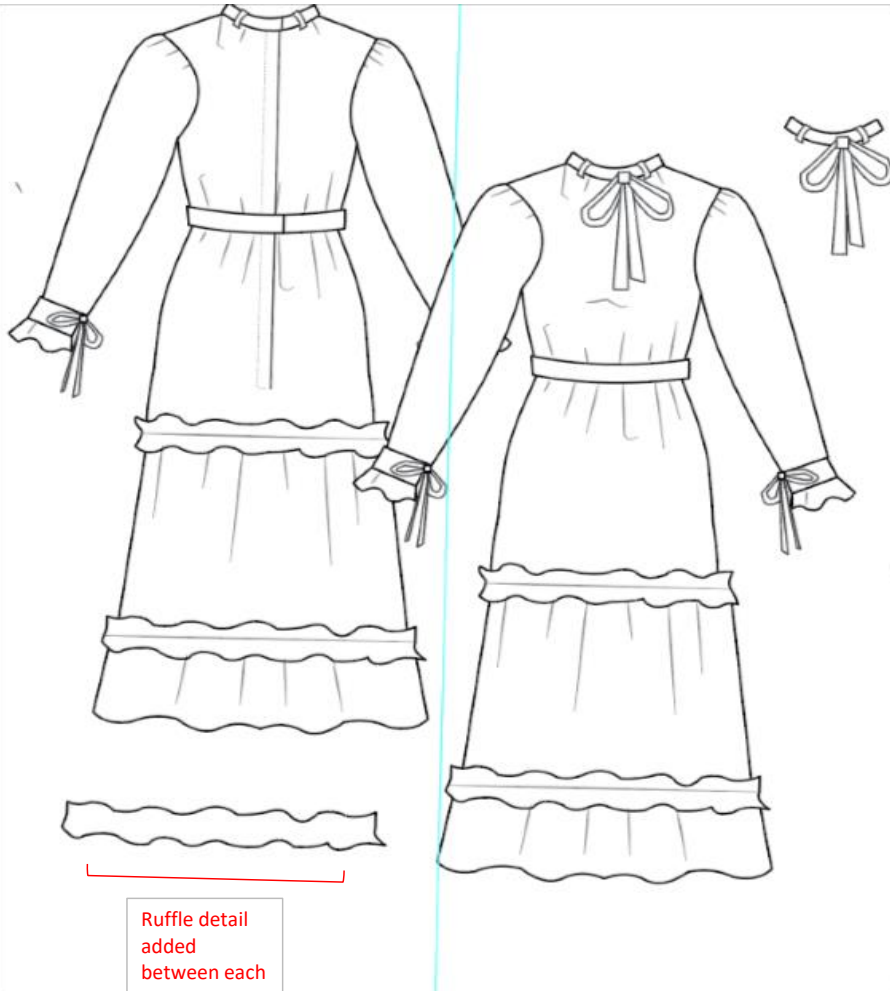


FLAT SKETCH



Neck scarf
with neck
loops

Ruffle detail
added
between each
layer of skirt

GRACIE BELLE

Tech Sketches

Website/Contact Info

Style Name & Number

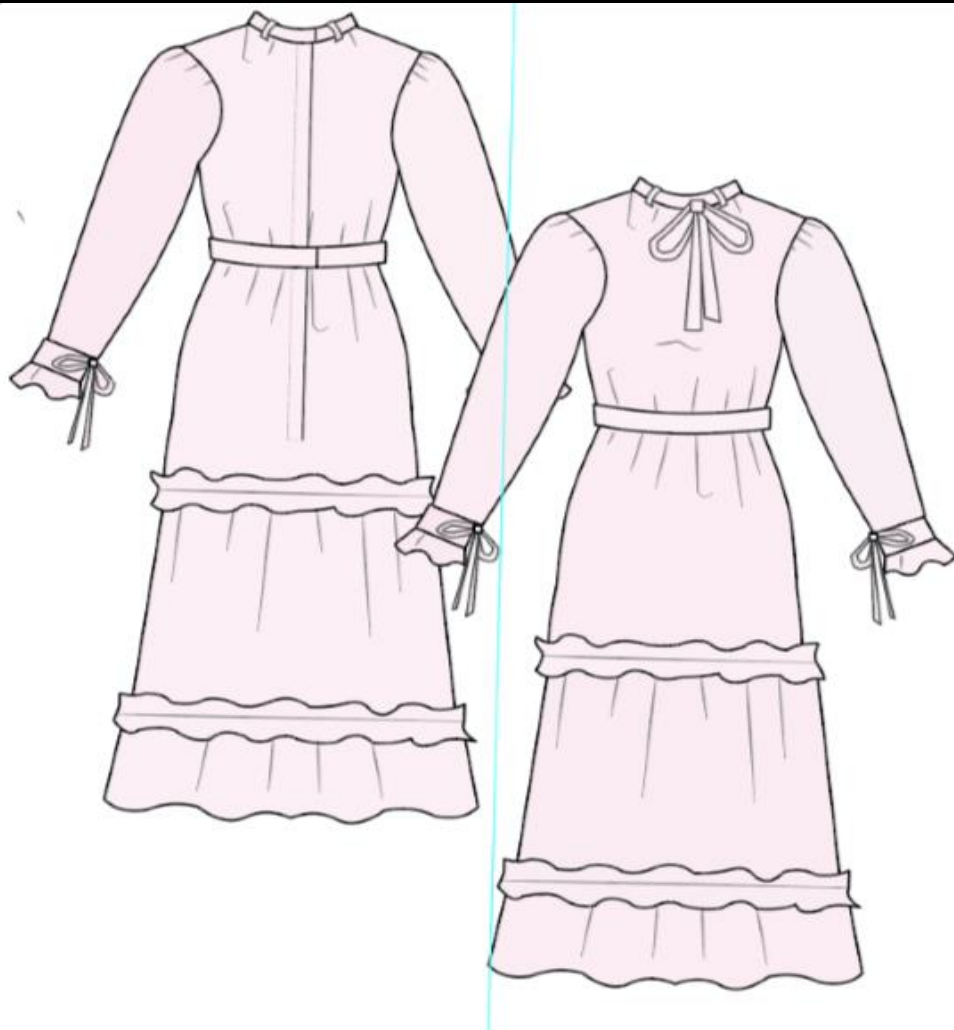
--	--

GRACIE BELLE

Website/Contact Info

COLORWAYS

Style Name & Number




COLORWAY	PANTONE								
Cameo Pink	#efbcc								
Fern Green	#4f7942								
Pink Sherbet	#f78fa7								



GRACIE BELLE

Website/Contact Info

FABRICS

TYPE	SUPPLIER	REF. #	IMAGE	DESC.	FINISHES	CONTENT	WEIGHT
BODY FABRIC	SUPPLEX SELLERS	FABRIC A (SEE FABRIC MAP)		PIECE DYE 2 WAY STRETCH	WICKING, AN	100% Rayon	180 GSM
INTERFACING	VENDOR TO SUPPLY	FABRIC C		INTERFACING SUITABLE FOR BODY FABRIC	NA	INTERFACING	LIGHTWEIGHT

TRIMS

TYPE	SUPPLIER	REF. #	IMAGE	DESC.	PLACEMENT
ZIPPER	YKK	N/A		REVERSE COIL ZIPPER	CENTER BACK
ZIPPER PULL	YKK	3CC		METAL ZIPPER PULL	CENTER BACK
THREAD	CLARK AND COATS	THR01		POLY BLEND	ENTIRE GARMENT

LABELS/HANGTAGS/PACKAGING

TYPE	SUPPLIER	REF. #	DESC.	PLACEMENT
INTERIOR LABEL	DUTCH LABEL	LBL01	SEW ON	INSIDE CB NECK (SEE ART)

FABRIC MAP





Style

						COLOR
CONSTRUCTION	WIDTH	YIELD	UM (Units of Measure)	UNIT PRICE	EXTD PRICE	CAMEO PINK
KNIT	59"	3	YDS	\$ 7.00	\$ 21.00	CAMEO PINK
NON-WOVEN	59"	0.1	YDS	\$ 1.00	\$ 0.10	WHITE
						COLOR
SIZE	QTY	UM	UNIT PRICE	EXTD PRICE	CAMEO PINK	
#3	1	EA	\$ 0.50	\$ 0.50		
#3	1	EA	\$ 0.10	\$ 0.10	MATTE NICKEL	
NA	1	EA	\$ -	\$ -	CAMEO PINK	
						COLOR
SIZE	QTY	UM			AUBURN	
1.5 * 1.5	1	EA	\$ 0.50	\$ 0.50	AUBURN	
COSTING	Raw Materials Cost			RMC	\$ 22.20	
	Cut Make Trim			CMT	\$ 8.00	
	Cost of Goods			COG	\$ 30.20	
	Wholesale			WHLSL	\$ 66.44	
	Retail			RTL	\$ 146.17	

BOM

Name & Number

WAYS

**PINK
SHERBET**

PINK
SHERBET

WHITE

WAYS

**PINK
SHERBET**

PINK
SHERBET

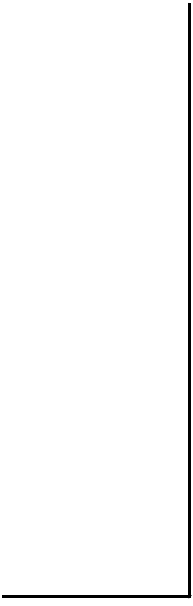
MATTE
NICKEL

WAYS

PINK

PINK





GRACIE BELLE				GRADED SPEC			
Website/Contact Info				Style Name & Number			
					SAMPLE SIZE		
Code (SEE MSMNT GUIDE)	POM Description	TOL+/-	XS	S	M	L	XL
A	Sleeve Length	1/8'			23'		
B	Scarf	1/8'			54'		
C	Waist to hem	1/8'			31 1/2'		
D	Upper Ruffle	1/8'			10'		
E	Middle Ruffle	1/8'			15 1/2'		
F	Bottom Ruffle	1/8'			5'		
G	Hem	1/8'			100'		

GRACIE BELLE				1ST PROTO			
Website/Contact Info				Style Name & Number			
Color Code:	Yellow= measurement has been revised			FIT MODEL: GRACE ALLRED			
	Bold red= measurement is out of tolerance			DATE: 12/10/23			
Code	POM Description	TOL+/-	M	1ST PROTO ACTUAL	DEVIANCE	REVISED MSMNT	COMMENTS
A	Sleeve Length	1/8'	23'		#VALUE!		
B	Scarf	1/8'	54'		#VALUE!		
C	Waist to hem	1/8'	31 1/2'		#VALUE!		
D	Upper Ruffle	1/8'	10'		#VALUE!		
E	Middle Ruffle	1/8'	15 1/2'		#VALUE!		
F	Bottom Ruffle	1/8'	5'		#VALUE!		
G	Hem	1/8'	100'		#VALUE!		
DETAILS / WASH / TRIM							