

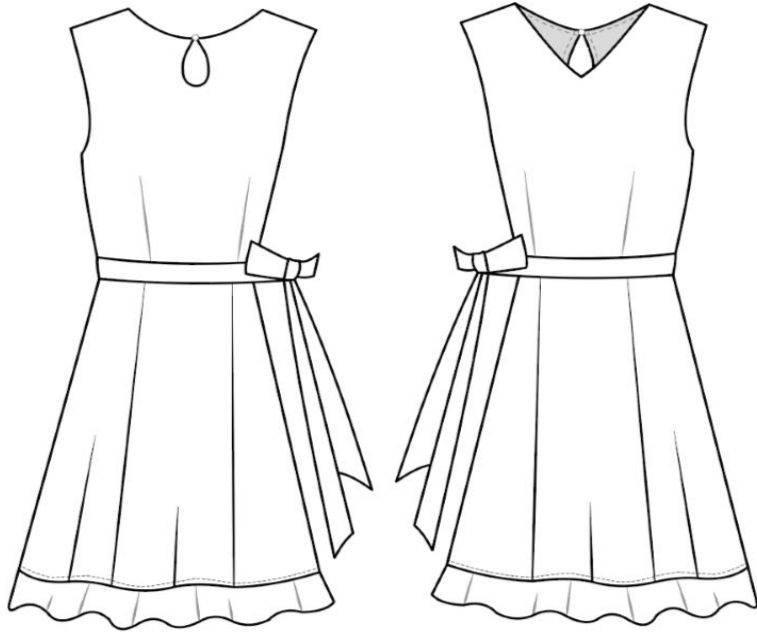
# GRACIE BELLE

# COVER

Grace Allred

HONGDAE CHIC LOOK 3

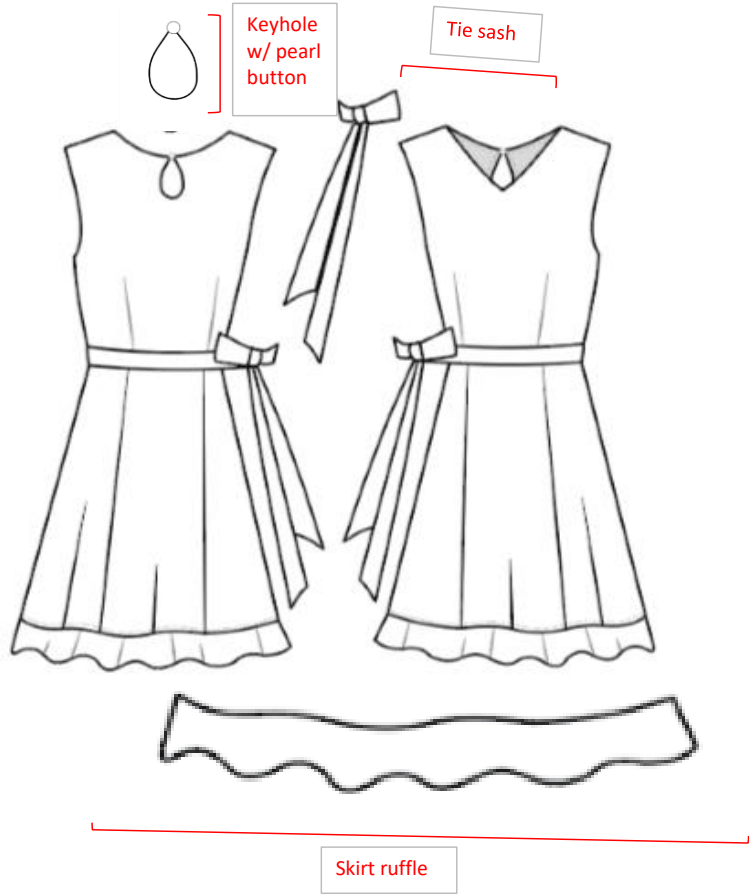
<b>STYLE #</b>	LOOK 3	<b>CALENDAR:</b>		
<b>STYLE NAME</b>	HONGDAE CHIC	<b>ITEM</b>	<b>IN-HOUSE</b>	<b>Attention:</b>
<b>SEASON</b>	SUMMER	Lab Dips	4/22/2023	GRACE ALLRED
<b>VENDOR</b>		Fabrics	4/22/2023	GRACE ALLRED
<b>COO (Country Of Origin)</b>	UNITED STATES	First Protos	4/22/2023	GRACE ALLRED
<b>CREATED BY</b>	GRACE ALLRED	Second Protos	5/20/2023	GRACE ALLRED
<b>CREATOR'S CONTACT</b>		Pre-Production Samples	6/23/2023	GRACE ALLRED
<b>DATE SENT</b>	3/25/2023	Bulk Delivery Landed	9/26/2023	GRACE ALLRED



## REVISIONS

DATE	NAME	TAB	DESCRIPTION

FLAT SKETCH



**GRACIE BELLE**

**Tech Sketches**

Grace Allred

HONGDAE CHIC LOOK 3

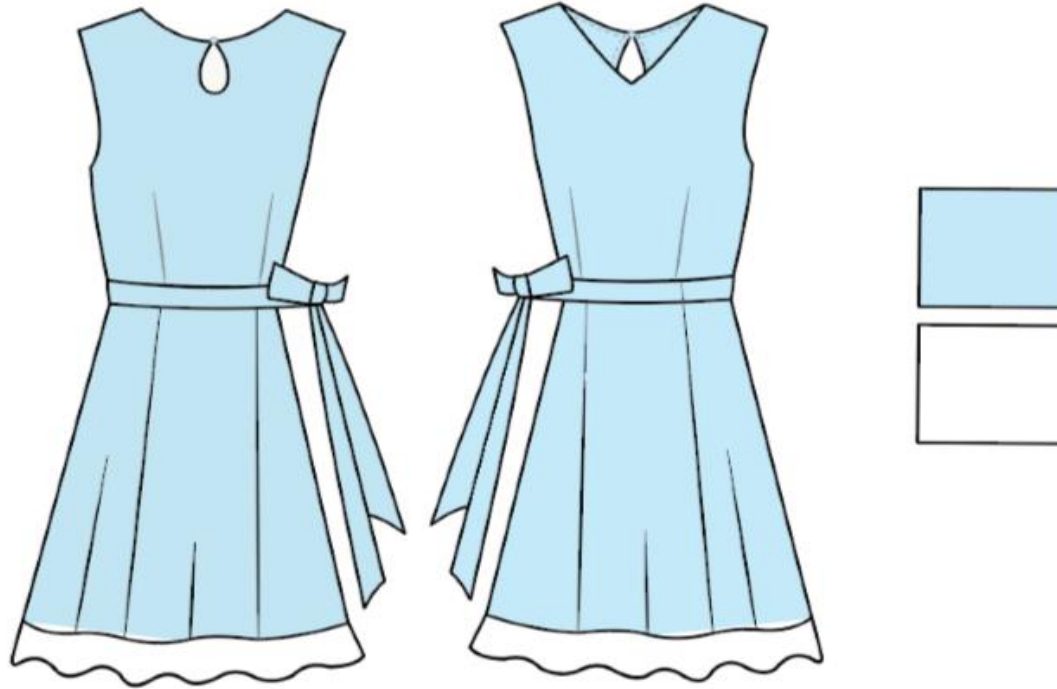
--

# GRACIE BELLE

Grace Allred

# COLORWAYS

HONGDAE CHIC LOOK 3



COLORWAY	PANTONE								
Baby Blue Eyes	#a1caf1								
Cream	#faf4e3								



# GRACIE BELLE

Grace Allred

## FABRICS

TYPE	SUPPLIER	REF. #	IMAGE	DESC.	FINISHES	CONTENT	WEIGHT
BODY FABRIC	DONGDAEMUN MARKET	FABRIC A (SEE FABRIC MAP)		PIECE DYE 2 WAY STRETCH	NA	100% TWEED	180 GSM
BODY FABRIC	DONGDAEMUN MARKET	FABRIC B (SEE FABRIC MAP)		PIECE DYE 2 WAY STRETCH	WICKING, ANTI-BACTERIAL	100% POLYESTER	181 GSM

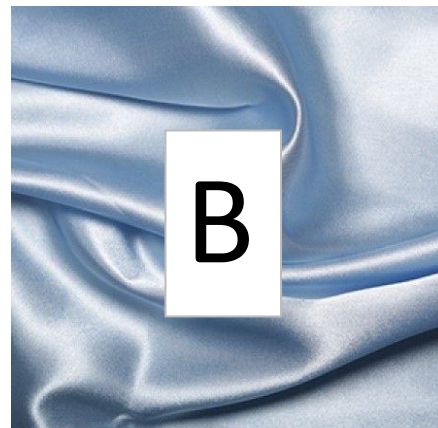
## TRIMS

TYPE	SUPPLIER	REF. #	IMAGE	DESC.	PLACEMENT
LACE	DONGDAEMUN MARKET	N/A		LACE TRIM	HEM
THREAD	CLARKS AND COATS	N/A		POLY BLEND	ENTIRE GARMENT
PEARL BUTTON	SEATTLE	N/A		PLASTIC	TOP OF KEYHOLE

## LABELS/HANGTAGS/PACKAGING

TYPE	SUPPLIER	REF. #	DESC.	PLACEMENT
INTERIOR LABEL	DUTCH LABELS	LBL01	SEW IN	INSIDE CB NECK

## FABRIC MAP





HONGDA

						<b>COLOR</b>
<b>CONSTRUCTION</b>	<b>WIDTH</b>	<b>YIELD</b>	<b>UM (Units of Measure)</b>	<b>UNIT PRICE</b>	<b>EXTD PRICE</b>	<b>BABY BLUE</b>
WOVEN	59"	2	YDS	\$ 6.50	\$ 13.00	BABY BLUE
WOVEN	59"	1.56	YDS	\$ 4.00	\$ 6.24	BABY BLUE
						<b>COLOR</b>
<b>SIZE</b>	<b>QTY</b>	<b>UM</b>	<b>UNIT PRICE</b>	<b>EXTD PRICE</b>	<b>BABY BLUE</b>	
NA	3	YDS	\$ 1.00	\$ 3.00		
NA	1	EA	\$ 3.00	\$ 3.00	BABY BLUE	
NA	1	EA	\$ 0.50	\$ 0.50		
						<b>COLOR</b>
<b>SIZE</b>	<b>QTY</b>	<b>UM</b>			<b>AUBURN</b>	
1.5 * 1.5	1	EA	\$ 0.50	\$ 0.50	AUBURN	
<b>COSTING</b>	Raw Materials Cost			<b>RMC</b>	\$ 26.24	
	Cut Make Trim			<b>CMT</b>	\$ 8.00	
	Cost of Goods			<b>COG</b>	\$ 34.24	
	Wholesale			<b>WHL</b>	\$ 75.33	
	Retail			<b>RTL</b>	\$ 165.72	

---



# BOM

AE CHIC LOOK 3

**WAYS**

**CREAM**

**WAYS**

**CREAM**

CREAM

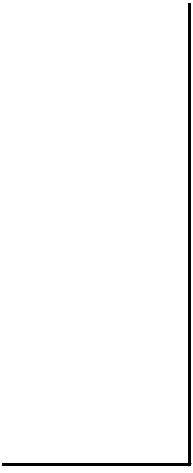
CREAM

**WAYS**

**PINK**

PINK





# GRACIE BELLE

# GRADED SPEC

Grace Allred

HONGDAE CHIC LOOK 3

					SAMPLE SIZE		
Code (SEE MSMNT GUIDE)	POM Description	TOL+/-	XS	S	M	L	XL
A	Key Hole Length	1/8'			5 1/4'		
B	Neckline	1/8'			21 1/2'		
C	Front Bust	1/8'			14 1/2'		
D	Front Dart	1/8'			6 1/2'		
E	Back Dart	1/8'			5 1/2'		
F	Shoulder Seam	1/8'			3 1/4'		
G	Waist to Hem	1/8'			19'		
H	Sash	1/8'			80'		
I	Hem	1/8'			105'		

GRACIE BELLE				1ST PROTO			
Grace Allred				HONGDAE CHIC LOOK 3			
Color Code:	Yellow= measurement has been revised			FIT MODEL: GRACE ALLRED			
	Bold red= measurement is out of tolerance			DATE: 12/10/23			
Code	POM Description	TOL+/-	M	1ST PROTO ACTUAL	DEVIANCE	REVISED MSMNT	COMMENTS
A	Key Hole Length	1/8'	5 1/4'		#VALUE!		
B	Neckline	1/8'	21 1/2'		#VALUE!		
C	Front Bust	1/8'	14 1/2'		#VALUE!		
D	Front Dart	1/8'	6 1/2'		#VALUE!		
E	Back Dart	1/8'	5 1/2'		#VALUE!		
F	Shoulder Seam	1/8'	3 1/4'		#VALUE!		
G	Waist to Hem	1/8'	19'		#VALUE!		
H	Sash	1/8'	80'		#VALUE!		
I	Hem	1/8'	105'		#VALUE!		
<b>COMMENTS</b>							
<b>FIT</b>							
fitted top							
flared bottom							
<b>CONSTRUCTION</b>							
Darts							
shoulders and waist							
<b>DETAILS / WASH / TRIM</b>							
lace trim							